

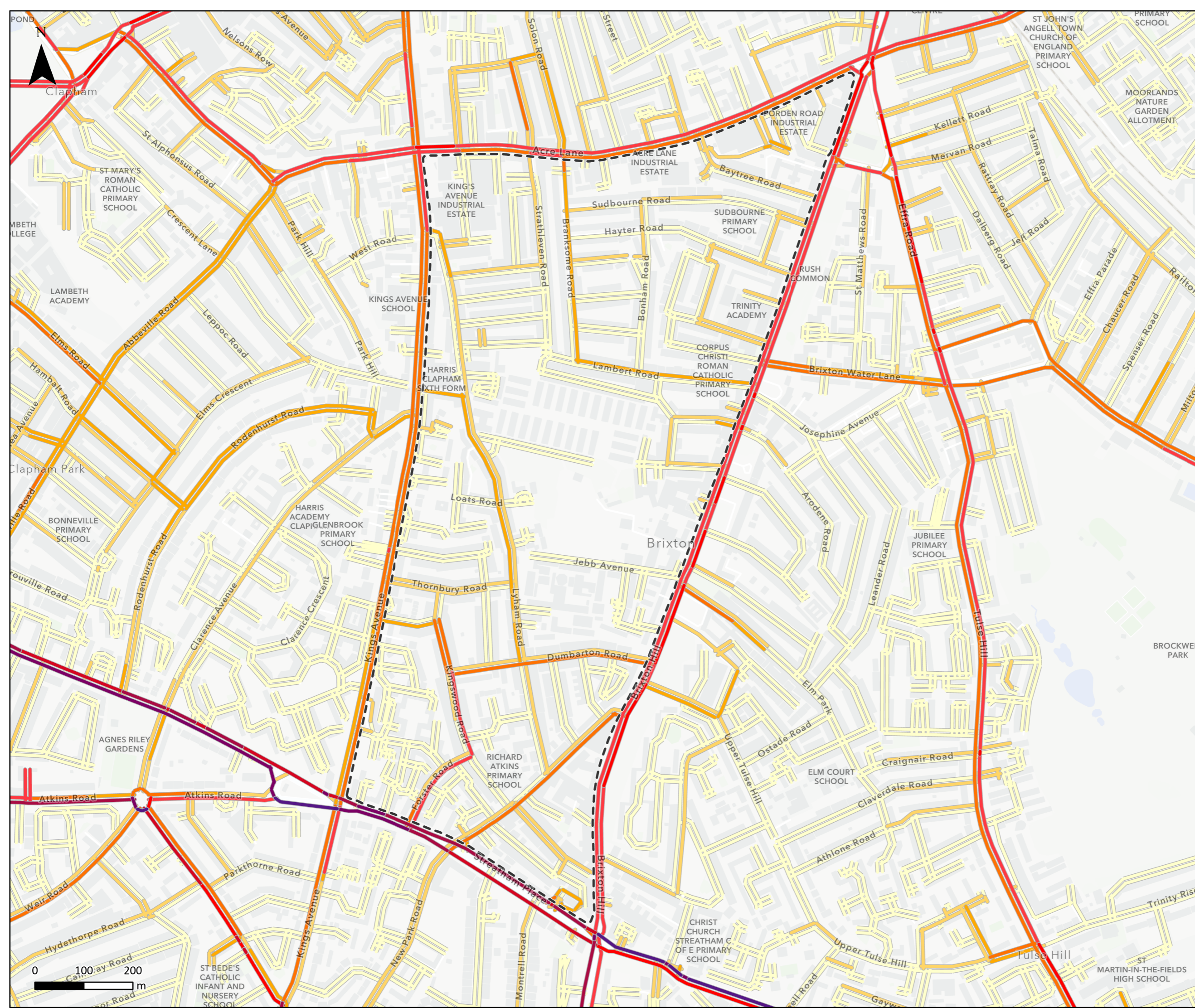
Brixton Hill LTN baseline data

Brixton Hill LTN baseline data

Transport Strategy and Programme

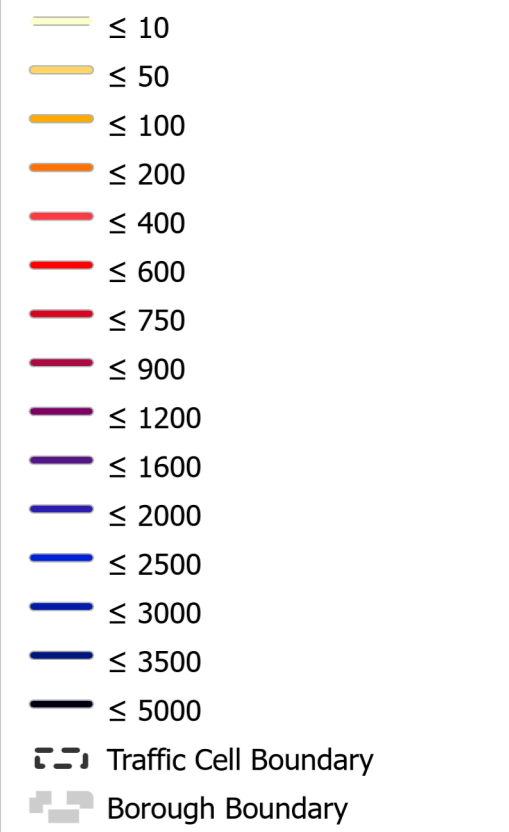
Contents

1. General Traffic Flow Estimates (AM)
2. General Traffic Flow Estimates (PM)
3. Estimated through traffic % within cell (AM)
4. Estimated through traffic % within cell (PM)
5. Killed or Seriously Injured 2017-2022
6. Killed, Seriously or Slightly Injured 2017-2022
7. Annual Mean NOx Concentrations 2019
8. Annual Mean PM10 Concentrations 2019
9. Annual Mean PM2.5 Concentrations 2019
10. Street Type Classification
11. 85th Percentile Speeds



Estimated General Traffic Flows Per Hour

Weekday AM Peak (7-10am)



Traffic data supplied by The Flow. The Flow collected the raw traffic data using telematics technology between June and December 2021.

Esri Community Maps Contributors, Esri UK, Esri, HERE, Garmin, Foursquare, GeoTechnologies, Inc, METI/NASA, USGS

PJA

G.03 Wenlock Studios
50-52 Wharf Road
London N1 7EU
T. 0207 566 3939

CLIENT

London Borough of Lambeth

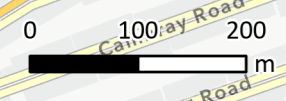
TITLE

BRIXTON HILL AREA

GENERAL TRAFFIC FLOW ESTIMATE

(WEEKDAY AM PEAK)

SCALE	DRAWN	REVIEWED	DATE
A3@1:7,000	JY	JMQ	03/10/2022
FIGURE NUMBER	REVISION		
GT_AM_Brixton Hill area	A		



Estimated General Traffic Flows Per Hour Weekday PM Peak (4-7pm)

- ≤ 10
- ≤ 50
- ≤ 100
- ≤ 200
- ≤ 400
- ≤ 600
- ≤ 750
- ≤ 900
- ≤ 1200
- ≤ 1600
- ≤ 2000
- ≤ 2500
- ≤ 3000
- ≤ 3500
- ≤ 5000

- Traffic Cell Boundary
- Borough Boundary

Traffic data supplied by The Flow. The Flow collected the raw traffic data using telematics technology between June and December 2021.

Esri Community Maps Contributors, Esri UK, Esri, HERE, Garmin, Foursquare, GeoTechnologies, Inc, METI/NASA, USGS



G.03 Wenlock Studios
50-52 Wharf Road
London N1 7EU
T. 0207 566 3939

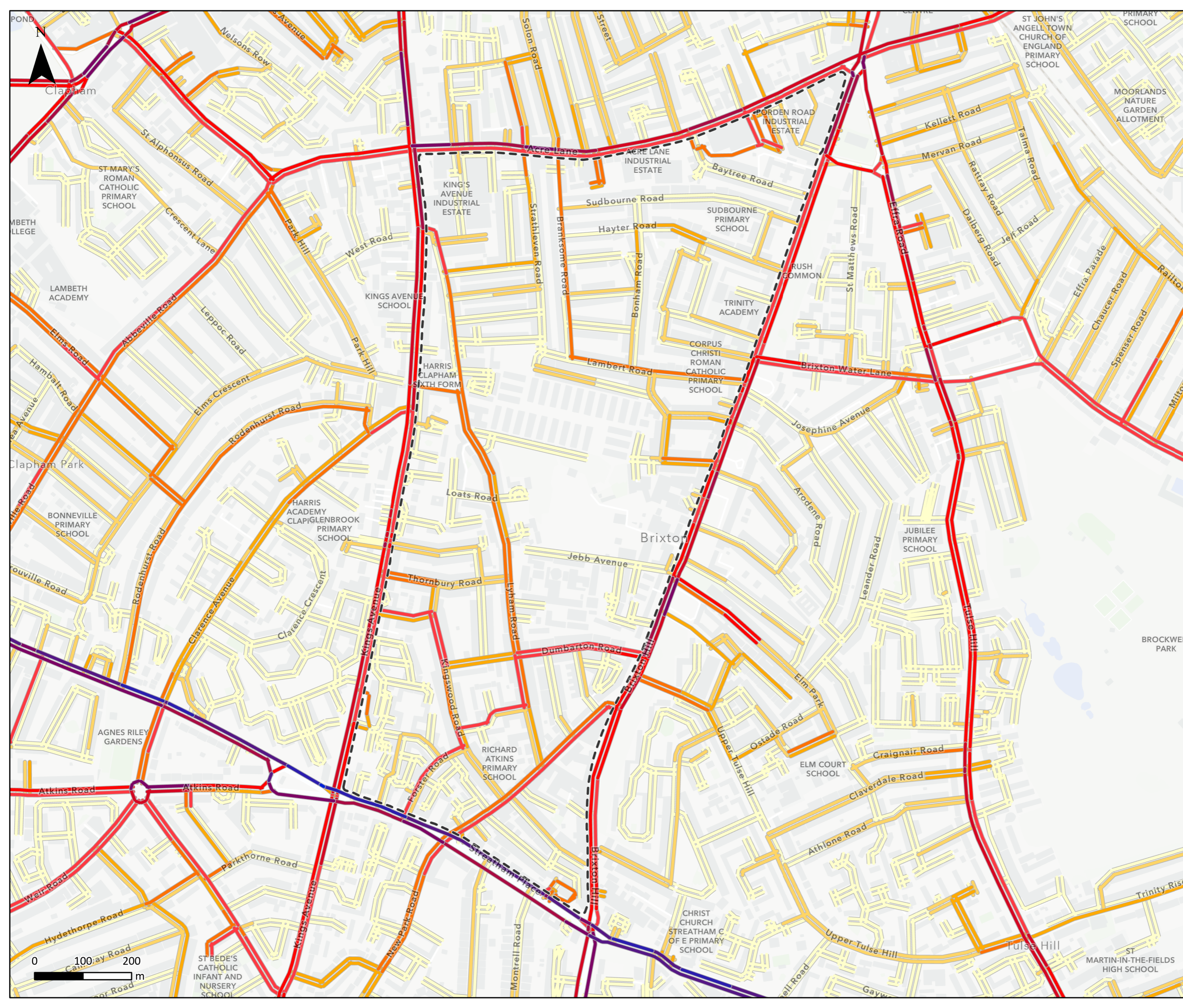
CLIENT

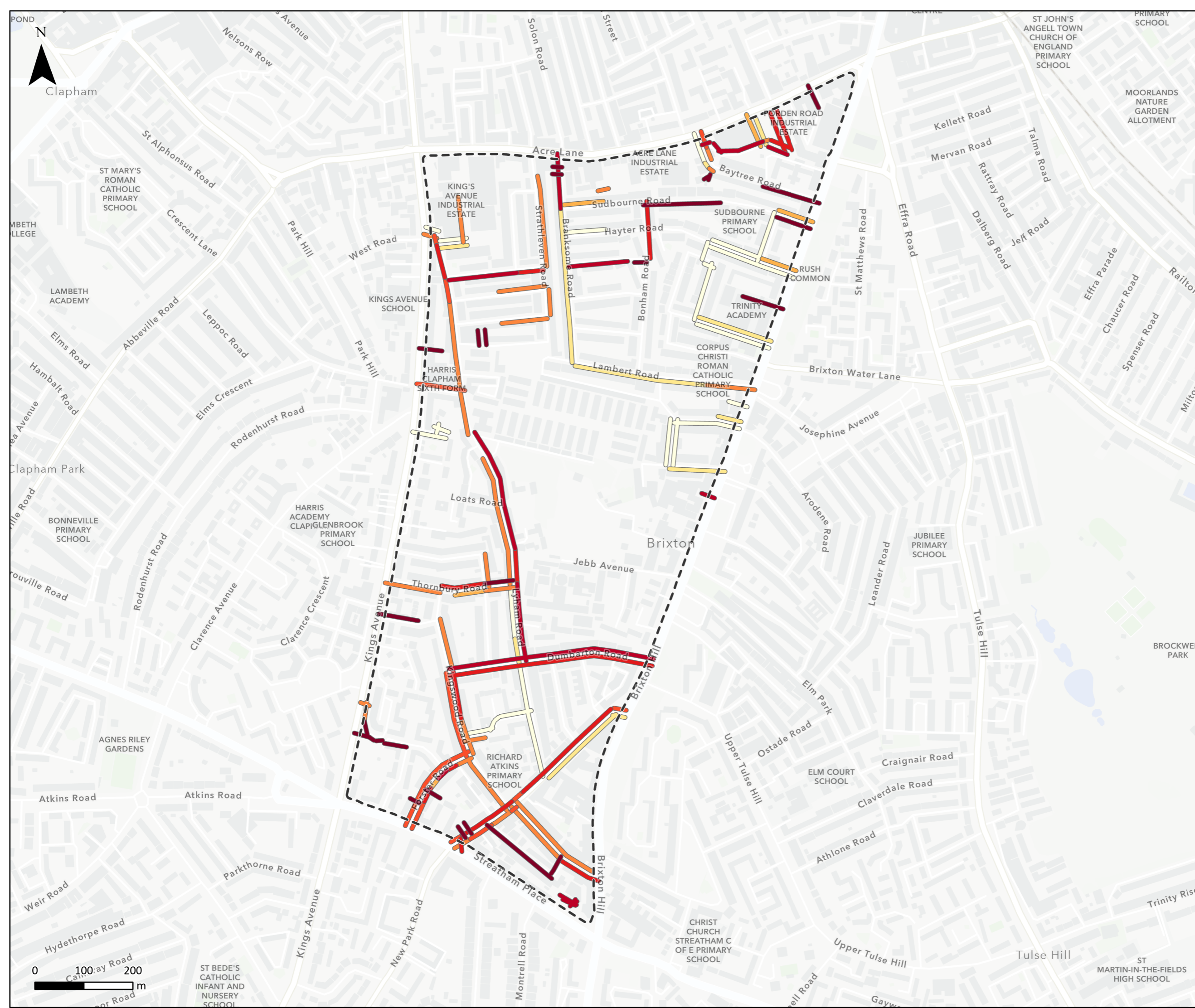
London Borough of Lambeth

TITLE

BRIXTON HILL AREA GENERAL TRAFFIC FLOW ESTIMATE (WEEKDAY PM PEAK)

SCALE	DRAWN	REVIEWED	DATE
A3@1:7,000	JY	JMQ	03/10/2022
FIGURE NUMBER	REVISION		
GT_PM_Brixton Hill area	A		





Estimated Through Traffic % within Cell

Weekday AM Peak (7-10am)

- ≤ 12.5 %
- ≤ 25 %
- ≤ 37.5 %
- ≤ 50 %
- ≤ 62.5 %
- ≤ 75 %
- ≤ 87.5 %
- ≤ 100 %

Traffic Cell Boundary

Borough Boundary

Traffic data supplied by The Floop. The Floop collected the raw traffic data using telematics technology between June and December 2021.

Excluded roads with general traffic flows fewer than 10 vehicles per hour

Esri Community Maps Contributors, Esri UK, Esri, HERE, Garmin, Foursquare, GeoTechnologies, Inc, METI/NASA, USGS



PJA

G.03 Wenlock Studios
50-52 Wharf Road
London N1 7EU
T. 0207 566 3939

CLIENT

London Borough of Lambeth

TITLE

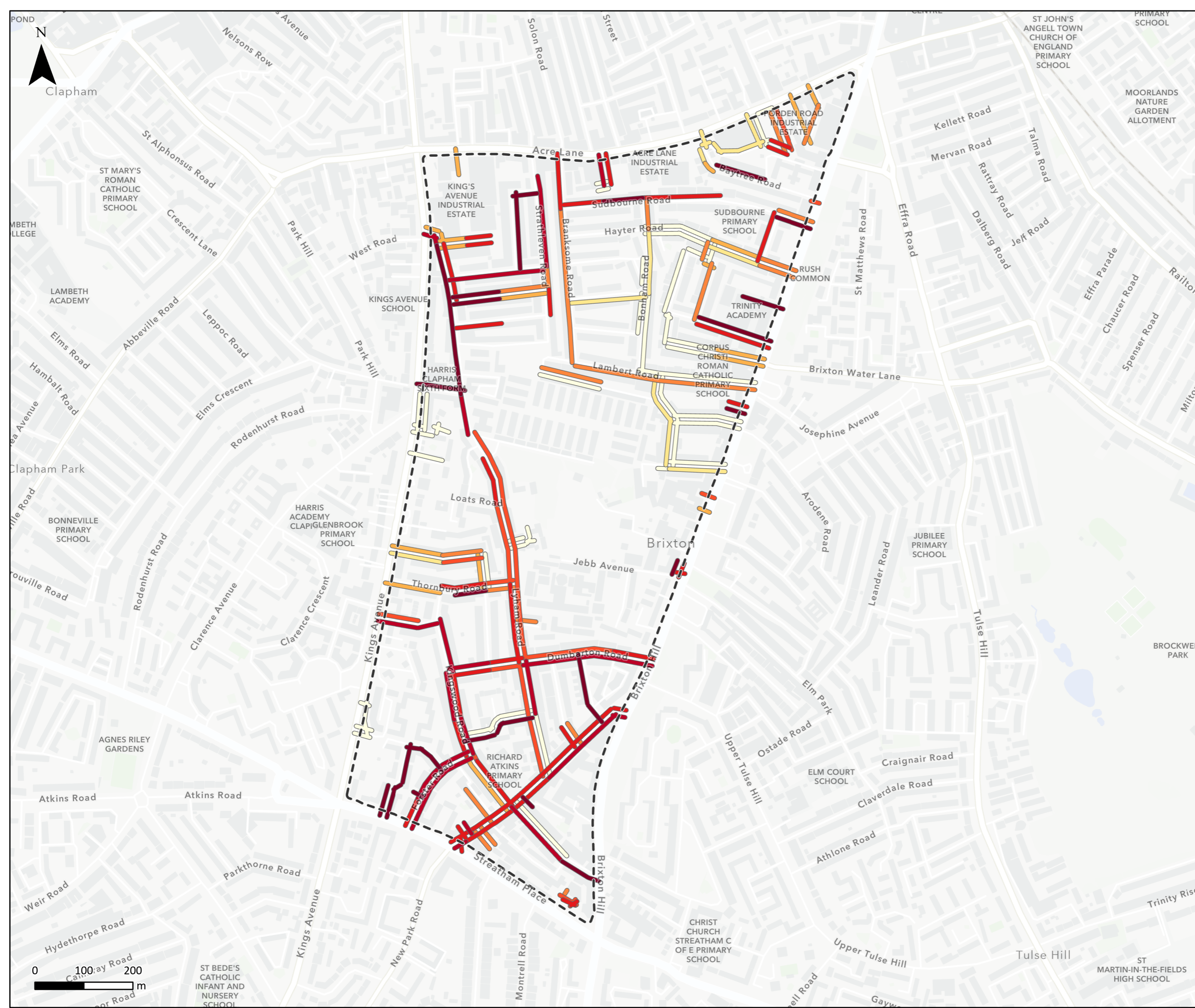
BRIXTON HILL AREA

THROUGH TRAFFIC % ESTIMATE

(WEEKDAY AM PEAK)

SCALE	DRAWN	REVIEWED	DATE
A3@1:7,000	JY	JMQ	03/10/2022
FIGURE NUMBER	REVISION		
TT%_AM_Brixton Hill area	A		





Estimated Through Traffic % within Cell

Weekday PM Peak (4-7pm)

- ≤ 12.5 %
- ≤ 25 %
- ≤ 37.5 %
- ≤ 50 %
- ≤ 62.5 %
- ≤ 75 %
- ≤ 87.5 %
- ≤ 100 %

- Traffic Cell Boundary
- Borough Boundary

Traffic data supplied by The Floop. The Floop collected the raw traffic data using telematics technology between June and December 2021.

Excluded roads with general traffic flows fewer than 10 vehicles per hour

Esri Community Maps Contributors, Esri UK, Esri, HERE, Garmin, Foursquare, GeoTechnologies, Inc, METI/NASA, USGS



PJA

G.03 Wenlock Studios
50-52 Wharf Road
London N1 7EU
T. 0207 566 3939

CLIENT

London Borough of Lambeth

TITLE

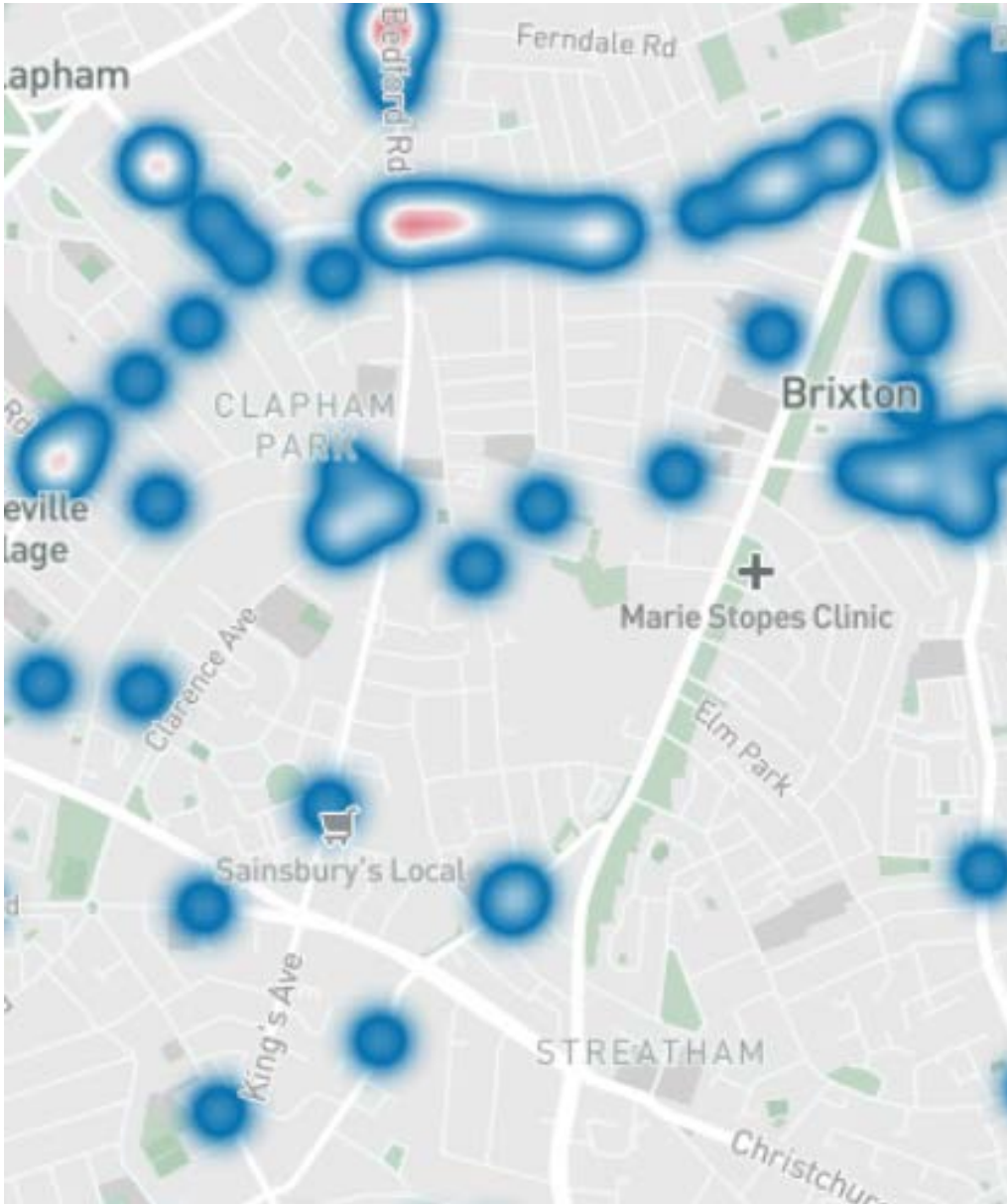
BRIXTON HILL AREA

THROUGH TRAFFIC % ESTIMATE

(WEEKDAY PM PEAK)

SCALE	DRAWN	REVIEWED	DATE
A3@1:7,000	JY	JMQ	03/10/2022
FIGURE NUMBER	REVISION		
TT%_PM_Brixton Hill area	A		

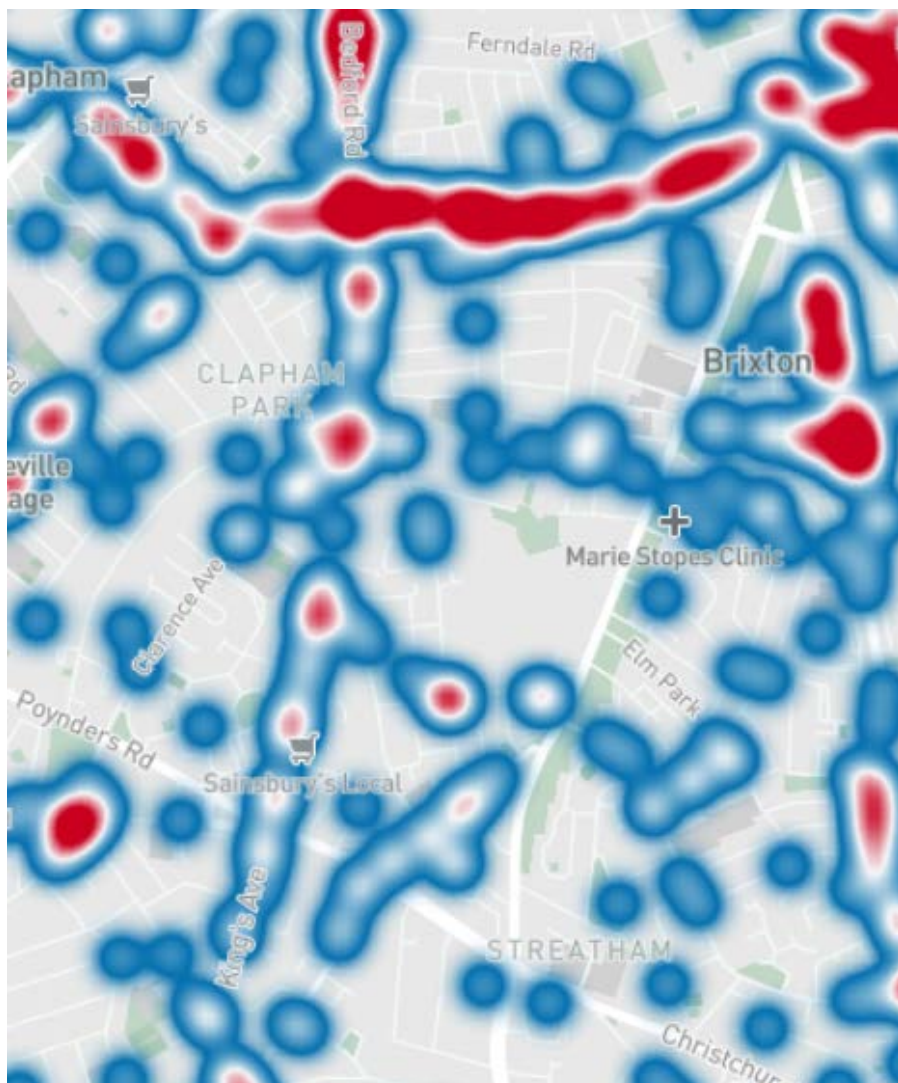
Killed or Seriously Injured 2017-2022:



Brixton Hill LTN baseline data

Transport Strategy and Programme

Killed, Seriously or Slightly Injured 2017-2022:

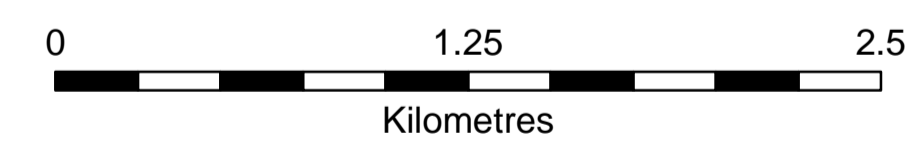
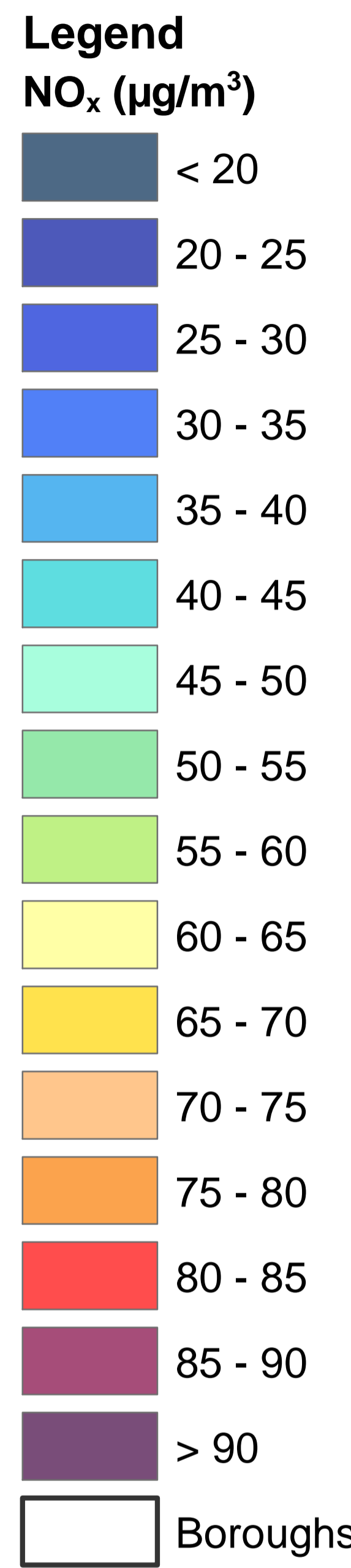
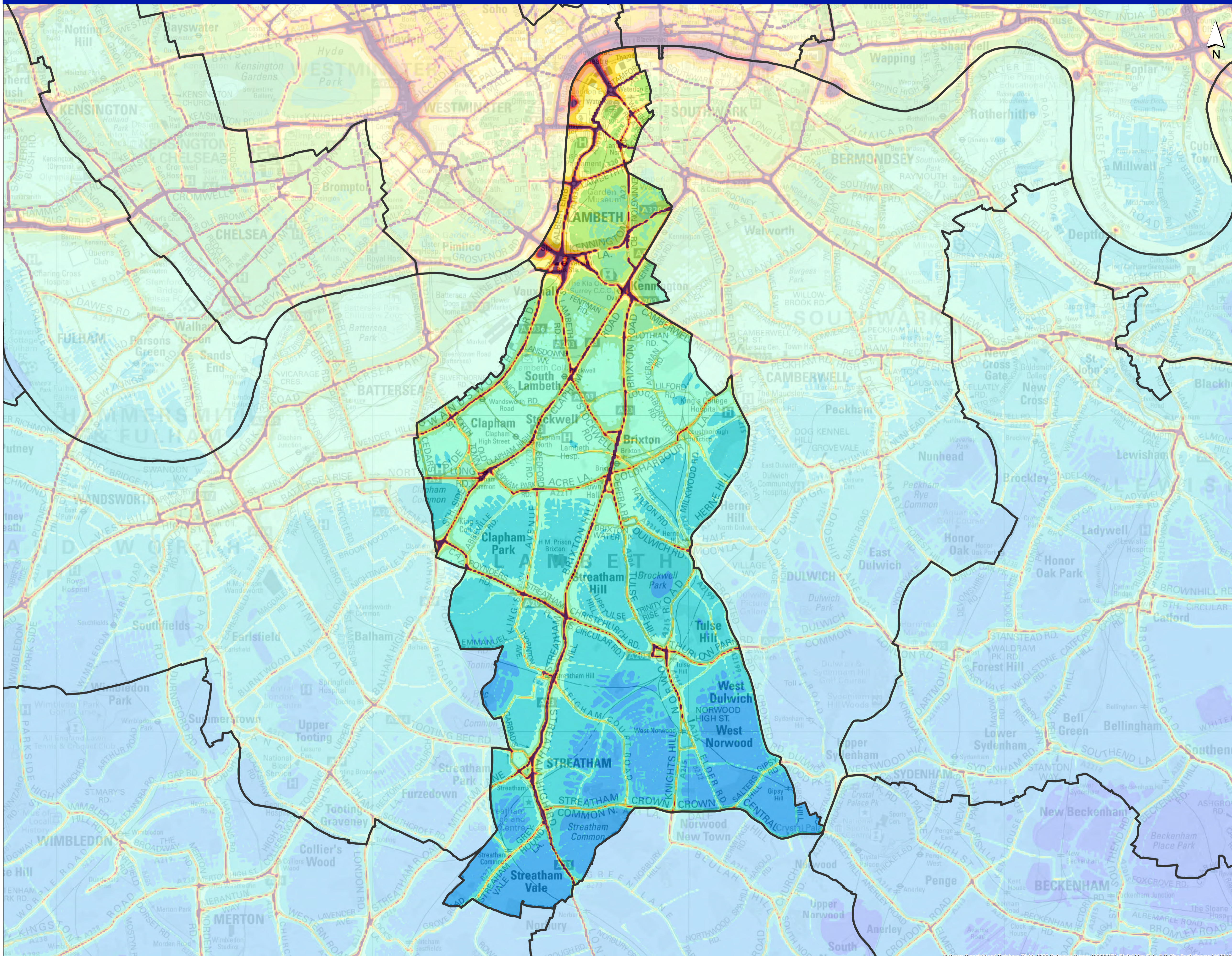


Brixton Hill LTN baseline data

Transport Strategy and Programme

London Borough of Lambeth Annual Mean NO_x concentrations 2019

LAEI 2019



MAYOR OF LONDON

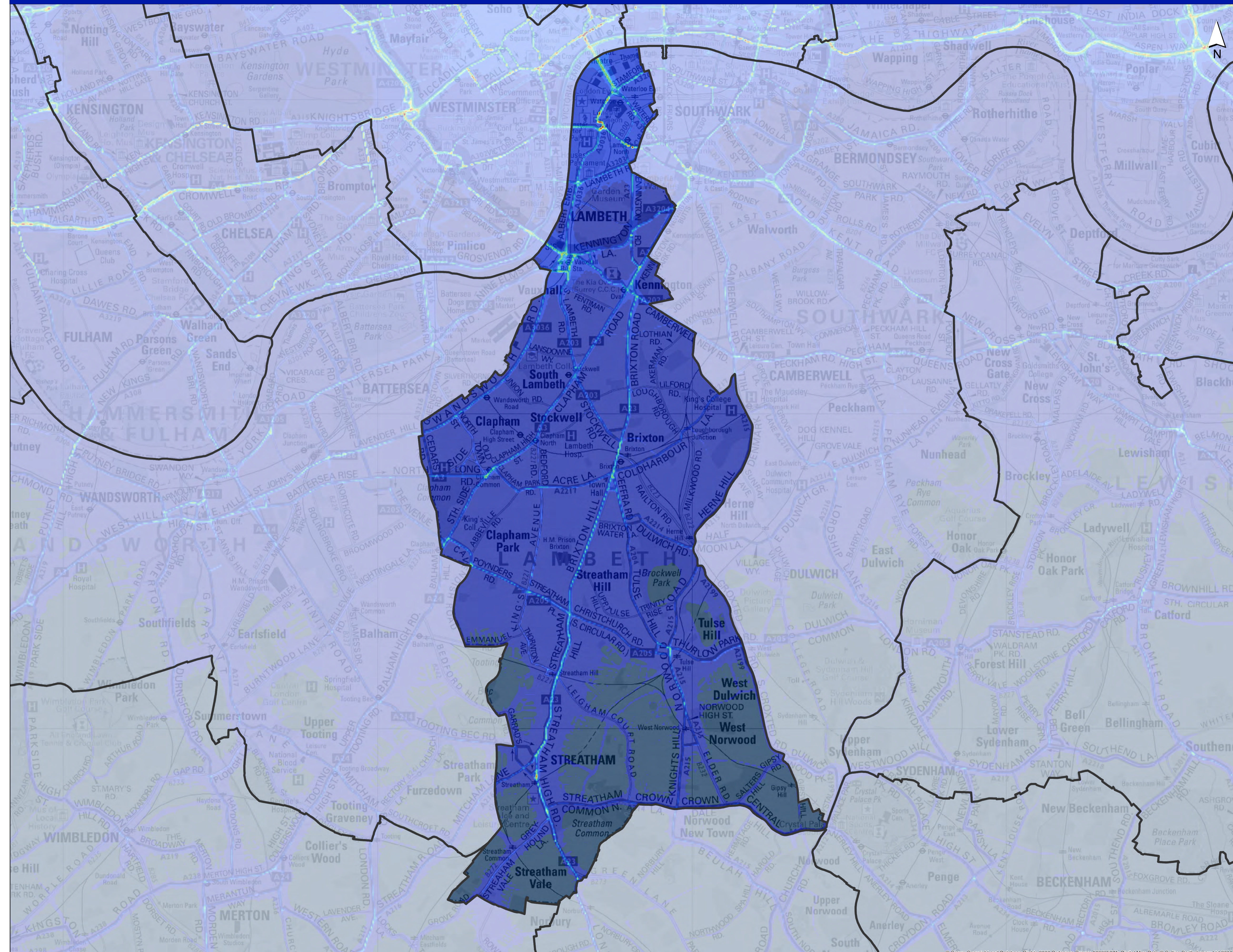
GREATER LONDON AUTHORITY



© Crown Copyright and Database Rights 2020 Ordnance Survey 100035971. Digital Map Data © Collins Bartholomew Ltd 2019

London Borough of Lambeth Annual Mean PM₁₀ concentrations 2019

LAEI 2019



Legend
PM₁₀ (µg/m³)

- < 16
- 16 - 19
- 19 - 22
- 22 - 25
- 25 - 28
- 28 - 31
- 31 - 34
- 34 - 37
- 37 - 40
- 40 - 43
- 43 - 46
- 46 - 49
- 49 - 52
- 52 - 55
- 55 - 58
- > 58
- Boroughs

0 1.25 2.5
Kilometres

MAYOR OF LONDON
GREATER LONDON AUTHORITY

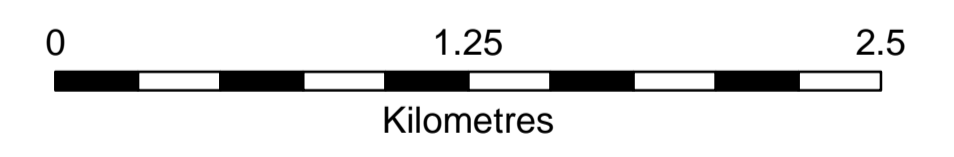
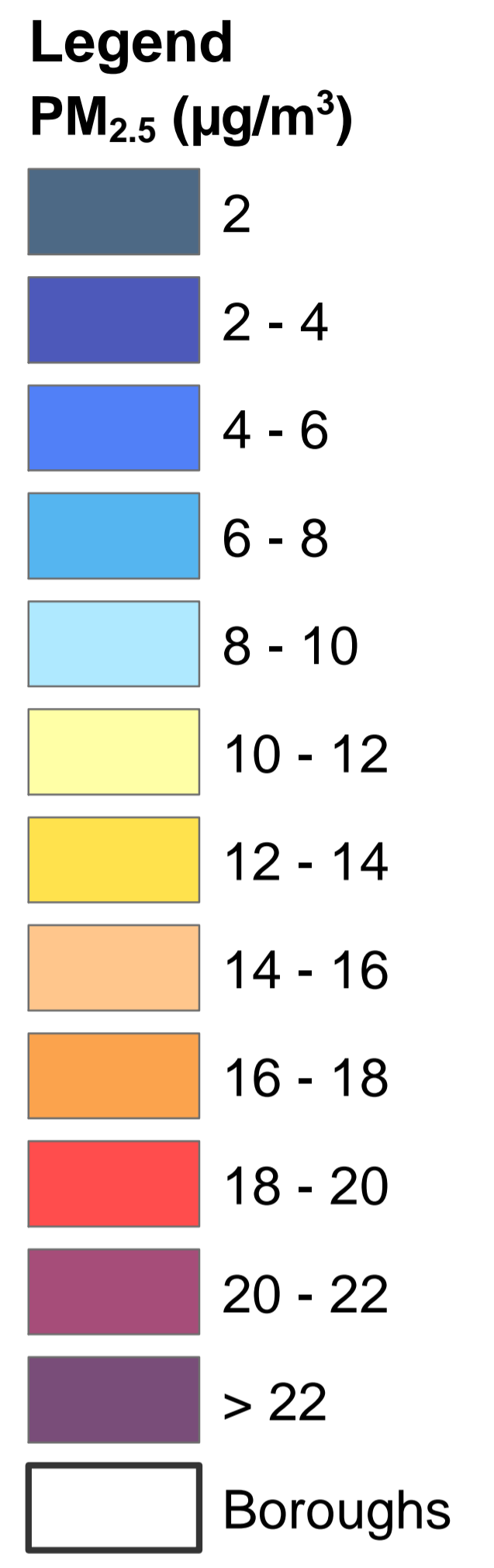
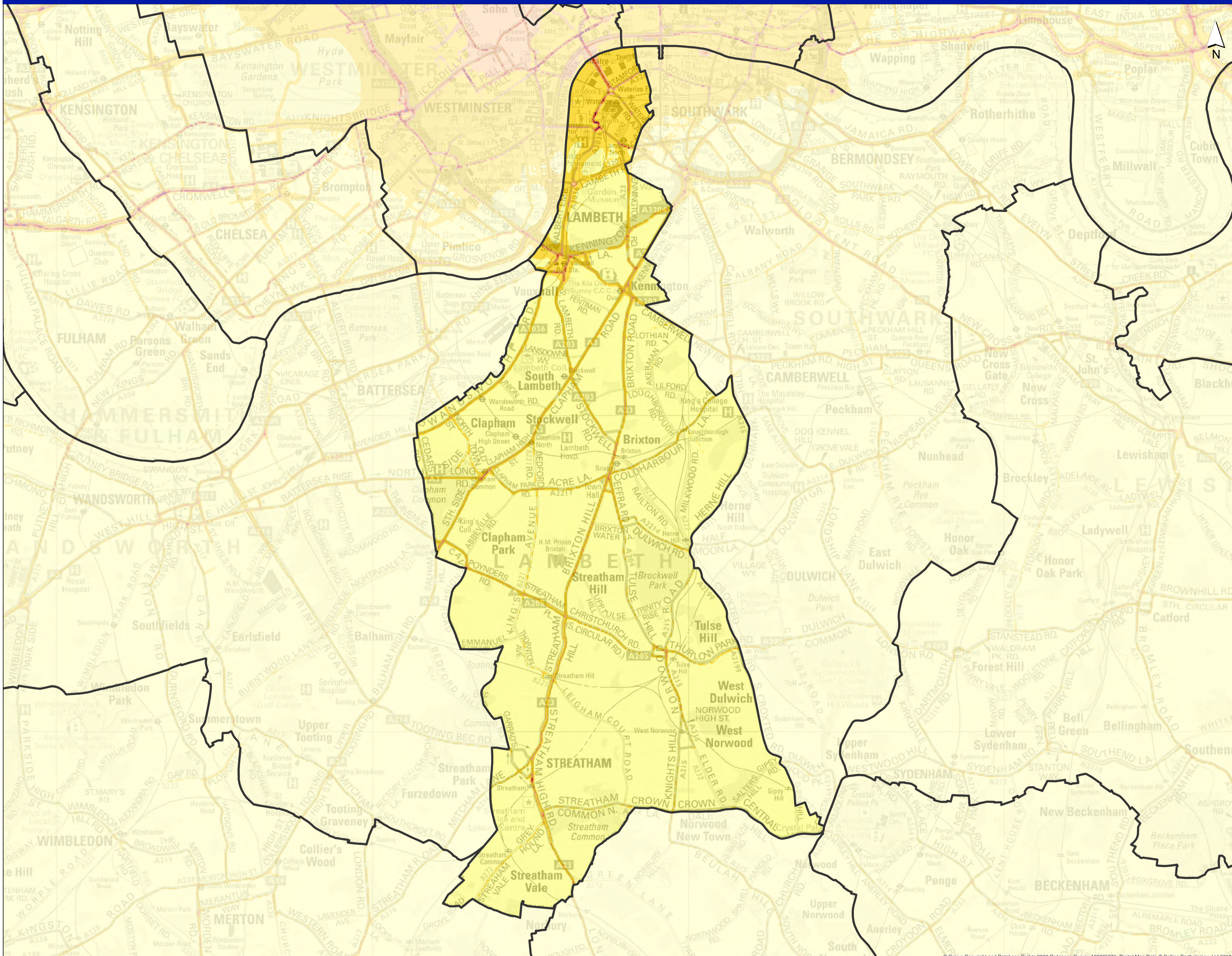
 **Transport for London**

 **CLEANER AIR FOR LONDON**

© Crown Copyright and Database Rights 2020 Ordnance Survey 100035971. Digital Map Data © Collins Bartholomew Ltd 2019

London Borough of Lambeth Annual Mean PM_{2.5} concentrations 2019

LAEI 2019



MAYOR OF LONDON

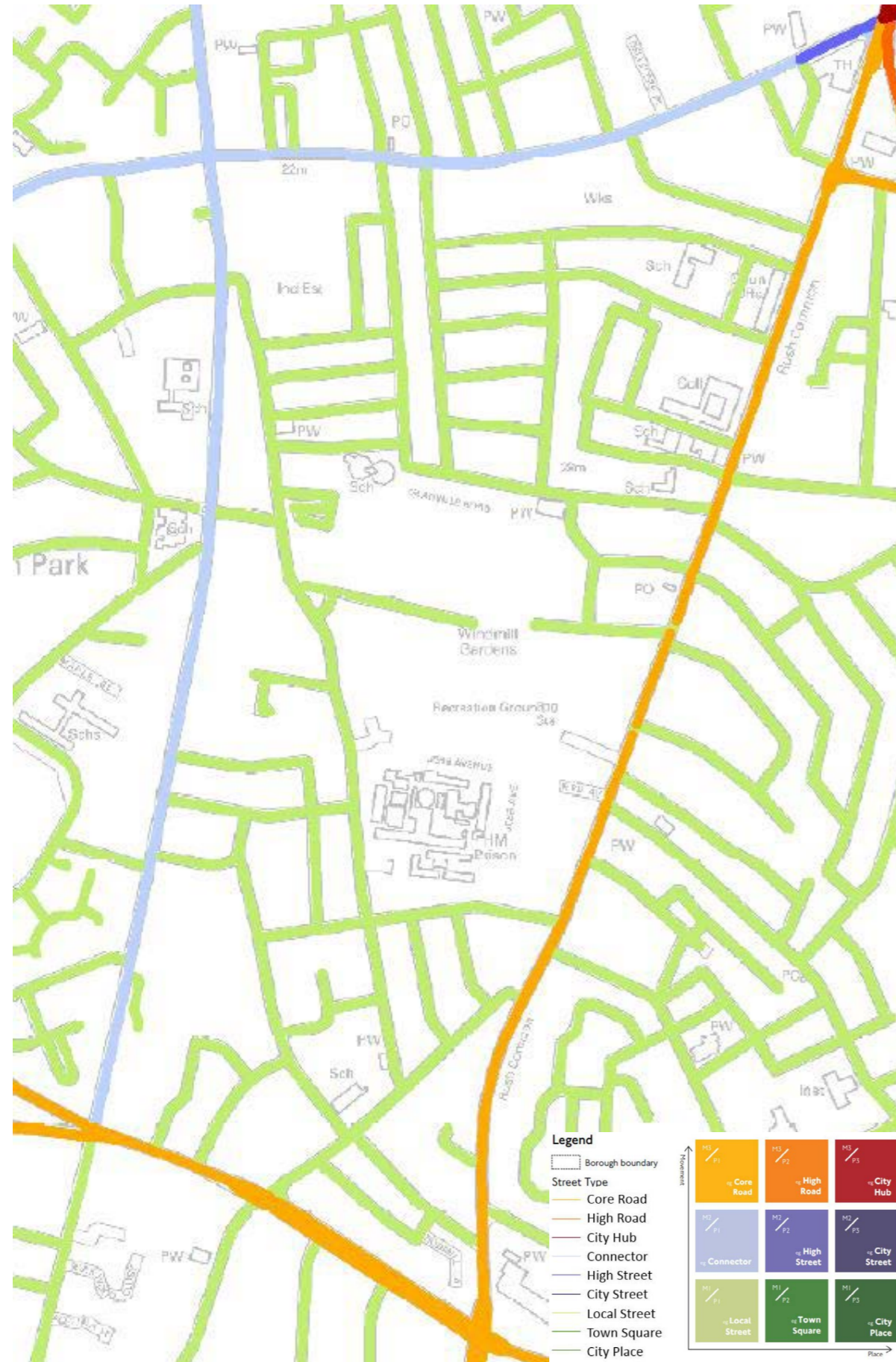
GREATERLONDONAUTHORITY



© Crown Copyright and Database Rights 2020 Ordnance Survey 100035971; Digital Map Data © Collins Bartholomew Ltd 2019

Street Type Classification

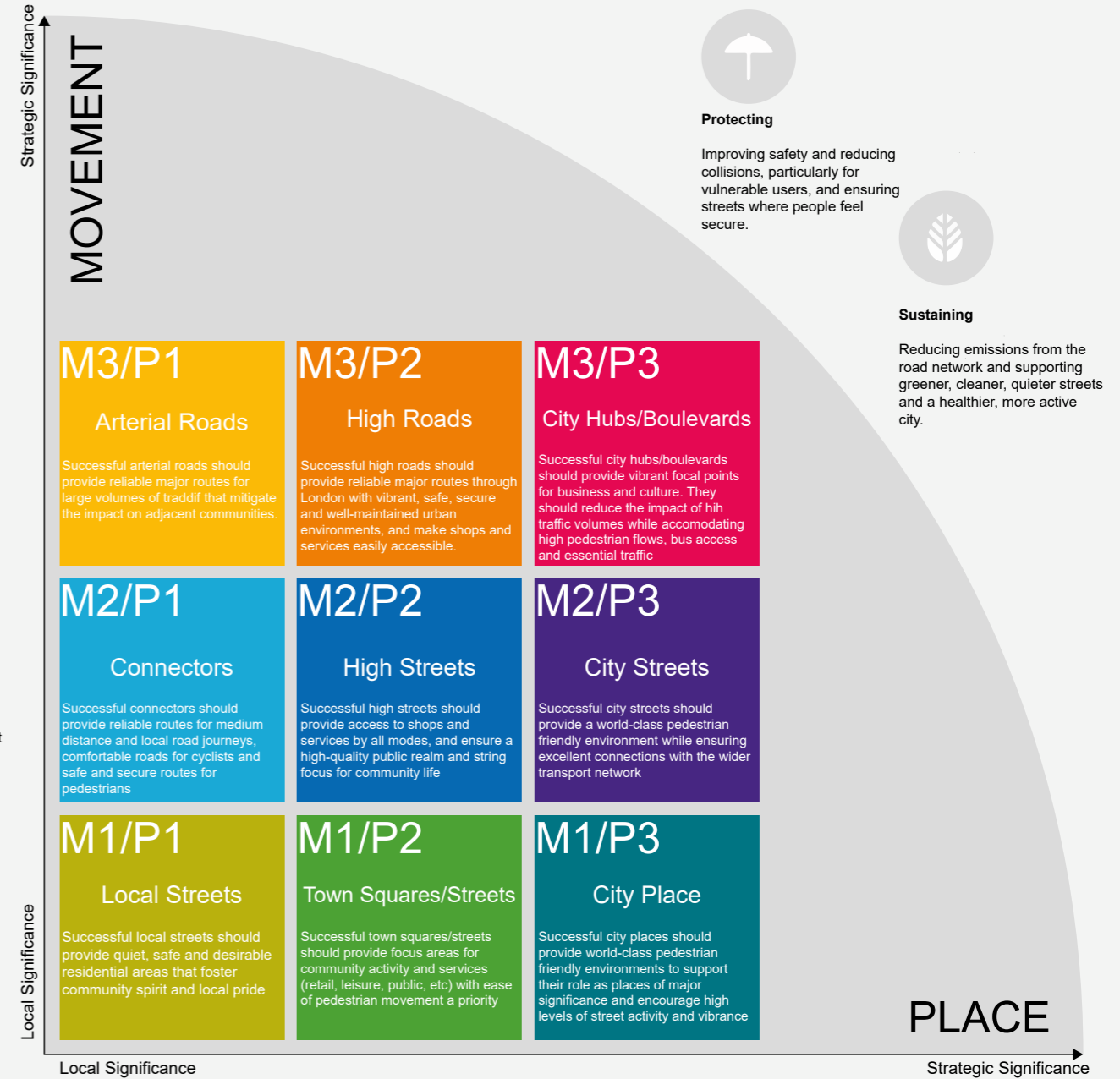
Street types reflect the importance of their movement and place functions, as well as the mix/balance of modes within movement, the nature of the built environment/aesthetic quality and character of different places.



Street Type = Movement & Place




M1, M2 or M3

P1, P2 or P3



85th Percentile Speeds

KEY:

-  SPEED \leq 20 MPH
-  SPEED >20 AND \leq 25 MPH
-  SPEED >25 MPH

